

EXT: Poll

Extension Key: jk_poll

Language: en

Keywords: forEditors, forAdmins, forIntermediates

Copyright 2000-2010, Johannes Krausmueller, <johannes@krausmueller.de>

This document is published under the Open Content License
available from <http://www.opencontent.org/opl.shtml>

The content of this document is related to TYPO3
- a GNU/GPL CMS/Framework available from www.typo3.org

Table of Contents

EXT: Poll.....	1	Configuration.....	10
Introduction.....	3	Upgrading to version 0.6+.....	10
What does it do?.....	3	Using TSconfig to add poll to every page.....	10
Screenshots.....	3	Hiding fields in the backend for editors.....	11
Users manual.....	5	Templates.....	11
Installation.....	5	Add additional colors for the poll bars.....	14
Creating a poll record.....	5	Multilanguage polls.....	15
Inserting the plugin for displaying the poll.....	7	RealURL.....	16
Allow comments on polls with extension comments.....	9	To-Do list.....	17
		ChangeLog.....	18

Introduction

What does it do?

A poll based on the extension quickpoll. A template-file can be used to define the output in the frontend. It is also possible to create a horizontal or vertical display of the percentage of users voted for an answer. Visit <http://www.krausmueller.de> for some demos of the extension.

Screenshots

– Vote for an answer

An interesting poll



This is a new poll extension

This poll is based on the extension quickpoll. A template-file can be used to define the output in the frontend. It is also possible to create a horizontal or vertical display of the percentage of users voted for an answer.

Do you like this extension?

- yes
- no
- don't know

– the vertical result of the poll

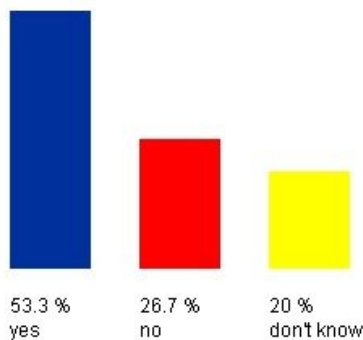
An interesting poll



This is a new poll extension

This poll is based on the extension quickpoll. A template-file can be used to define the output in the frontend. It is also possible to create a horizontal or vertical display of the percentage of users voted for an answer.

Do you like this extension?



– the horizontal result of the poll

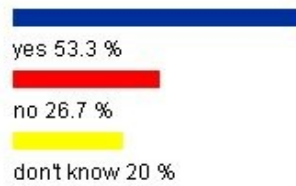
An interesting poll



This is a new poll extension

This poll is based on the extension quickpoll. A template-file can be used to define the output in the frontend. It is also possible to create a horizontal or vertical display of the percentage of users voted for an answer.

Do you like this extension?



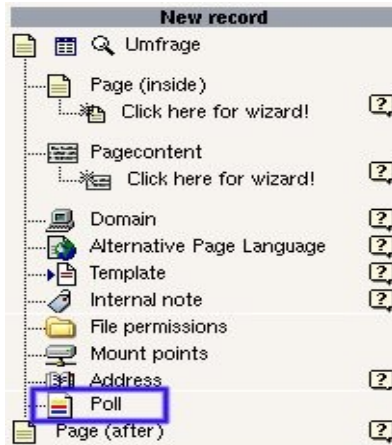
Users manual

Installation

Use the extension manager to install the extension.

Creating a poll record

To start a poll you have to create a new poll record. To do so, choose a site which contains the records and use the click-menu to create a new one.



A form opens, showing a poll record:

The screenshot shows a web form for configuring a poll. The form is titled "Poll [1] - Umfrage 1". It contains several sections:

- Hide:** A checkbox that is currently unchecked.
- valid till:** A checkbox that is currently unchecked, followed by an empty text input field.
- Title:** A text input field containing "Umfrage 1".
- Question:** A rich text editor with a toolbar. The paragraph style is set to "Default" and the text style is also "Default". The text area contains placeholder text: "Epsum factorial non deposit quid pro quo hic escorol. Olypian quarrels et gorilla congolium sic ad nauseum. Souvlaki ignitus carborundum e pluribus unum. Defacto lingo est igpay atinlay. Marquee selectus non provisio incongruous feline nolo contendre. Gratuitous octopus niacin, sodium glutimate. Quote meon an estimate et non interruptus stadium. Sic tempus fugit esperanto hiccup estrogen. Glorious". Below the text area, the path is shown as "Path: body > p".
- Votes:** A text input field containing the values "1", "1", and "0" on separate lines.
- Answers:** A text input field containing "Antwort 1", "Antwort 2", and "Antwort 3" on separate lines.
- Colors:** A text input field containing "blau", "rot", and "gelb" on separate lines.

There are fields where you can put a title, an image and your question. The important part is the textbox for your answers.

Every line describes an answer. The amount of votes for an answer are shown in the textbox "Votes". When you set up the poll this box should be clear or have a value of "0" for every answer. To define in which color the answer should be rendered you can use the field "Color". As colors you can use by default blue, red, yellow, green and black. Other colors can also specified (see section Configuration). If you don't define a color the default one is taken from the plugin configuration.

Here is an example for a poll with some colors defined:

Answers:

yes
no
don't know

Colors:

green
blue
yellow

To allow votes only until a special day but to show the result of the poll after this day you can use the field "valid till" at the very beginning of the form. Votes are only possible until the day specified.

Inserting the plugin for displaying the poll

You now have to insert a plugin as pagecontent to the page the poll should be displayed on in the frontend. To do so, create a new pagecontent and select "Insert plugin" as type. In the drop-down box "Plugin" you have to select "Poll". After this you can see a form like this:

If the page where you created the poll record isn't the same as the one where you inserted the plugin, you have to define the page with your poll record in the field "Startingpoint. If it is the same page, nothing special has to be done. Save the form and view the page on which you inserted the pagecontent (use the button "Save document and view page" on top of the form). You should now see your poll.

There are several options to configure your poll. They are separated in "General Settings" and "Template".

General Settings:

Option	Description
What to display	You can select the values "POLL" or / and "LIST". With "POLL" you display the newest poll. "LIST" shows a list of all polls located at the specified Startingpoint.
Template	You can set a template-file which should be used in the rendering process of the poll, if you'd like to adopt the layout to your needs (see also Configuration).
CSS file	You can set a CSS file which should be used in the rendering process of the poll, if you'd like to adopt the layout to your needs (see also Configuration).
Count votes for every language separately	If checked votes are counted for every language seperately. Otherwise votes from different languages are summarized.
Check if user can vote for every language separately	If checked a user might vote for every language available. Otherwise the checks if a user can still vote (see General Settings) are considered for every language an the user can only vote once.

POLL:

Option	Description
First answer is checked by default	The first answer is already checked. So the error of no answer selected cannot occur.
Allow to vote for more than one answer	Users can vote for more than more answer at the same time (checkboxes are used instead of radio buttons).
Set cookie for x days (value "off" for non-persistent cookie)	Specifies for how many days the cookie, preventing a visitor from voting again, will last. If you use the value "off" non-persistent cookies will be used (the cookies are deleted when the session ends). If no value is entered the default is 30 days. To disable cookies completely it is also possible to insert "no".
Allow only fe_users to vote	Only Frontend users can vote for an answer (you could set the cookie value to "no" to disable cookies).
Check IP before vote is possible	When selected the IP-addresses of the visitors who voted for an poll are saved. This can be used to prevent visitors to vote more than once when they disabled cookies.
Allow another vote after x hours	Allows another vote from an IP logged as already voted after specified value of hours. To specify values different from full hours use numbers like 0.5 for half an hour (you have to use a dot, commas are not accepted. Only takes effect if "Check IP before vote is possible" is selected in the option before.
Use captcha (Extension Captcha is required)	To vote for an answer the user has to insert a special string (see extension Captcha from Kasper).
Use comments (Extension comments is required)	Enables the use of the extension "comments" (adds GET parameters which can be used for configuration of comments). See section "Allow comments on polls with extension comments".
Page to forward to after vote	Forward to specified page after successful vote.
Include link to list of old polls	Include a link to old polls (text has to be set in locallang_db).

RESULT:

Option	Description
Type	Specifies the type of the poll. It can be chosen between horizontal and vertical (see screenshots in section Introduction).
Color	The default color if no color is defined in the poll record. The same values as in the poll record can be used here. If no color is given the default is blue.
Path for images	Specify path where images can be found (e.g.: fileadmin/template/images/). Default value is EXT:jk_poll/images/
Height/Width	The height or the width of the poll bar (depends on the type of the poll selected before). You should try some values to find one which suits you best.
Factor	The factor is used to stretch the poll bars. The size of the poll bars is the percentage of votes in pixel. Due to this fact they could be rather small, the factor is multiplied with the amount of pixels. A suitable value should be between 1 and 3.
Show zero percent as 1 pixel	If set, options with 0 percent are shown as 1px line in the result.

Option	Description
Render bars with CSS	Renders the poll bars with the help of CSS instead of classic use of images.
Width (pixels) for Google Chart	Specify the width of the image generated with Google Chart.
Height (pixels) for Google Chart	Specify the height of the image generated with Google Chart.
Use comments (Extension comments is required), but only on RESULT view	Enables the use of the extension "comments" only for RESULT view (adds GET parameters which can be used for configuration of comments). ents" (adds GET parameters which can be used for configuration of comments). See section "Allow comments on polls with extension comments".

LIST:

Option	Description
Amount of polls (LIST)	Limit the amount of shown polls to the inserted value.
Show first poll in LIST	Specifies if the newest poll should be shown in LIST or not.
Hide current poll	Specifies if the current poll should be shown in LIST or not.
Allow votes for old polls in LIST	When selected it is possible to vote for an old poll located in the list.
Show pagebrowser in LIST (Extension pagebrowse required)	Divides LIST of polls to several pages (pagebrowser) using the extension "pagebrowse" (must be installed).
Items per page (if using pagebrowser)	Set the polls shown on one page to the inserted value when using the pagebrowser.
Show results in LIST	Show the result of the polls already in LIST view.
Page for single view (POLL)	If you only selected the value "LIST" in the section "General Settings" you have to specify a page where a plugin with "POLL" exists, because the results of the polls will be displayed there. (Normally you should use the value "LIST" in connection with "POLL").
Show link to get back to previous page	Adds link to site visited before (one site back in history via JavaScript).

Allow comments on polls with extension comments

To allow users to make comments on a poll record you can use the extension poll from the repository. Just install the extension 'comments' and insert a page record 'Commenting system' to the same page containing the poll plugin. Configure 'comments' according to the manual of the extension. In addition you have to configure jk_poll. You can choose if comments should be shown every time or only if the user already voted on the result page.

If comments should be shown also if the user hasn't already voted for the poll you use the option 'Use comments (Extension comments is required)' in the flexform or 'plugin.tx_jkpoll_pi1.comments = 1' when using TypoScript. In addition your configuration for the extension 'comments' would look like that:

```
plugin.tx_comments_pi1.prefixToTableMap.tx_jkpoll_pi1 = tx_jkpoll_poll
plugin.tx_comments_pi1.showUidMap.tx_jkpoll_pi1 = uid
```

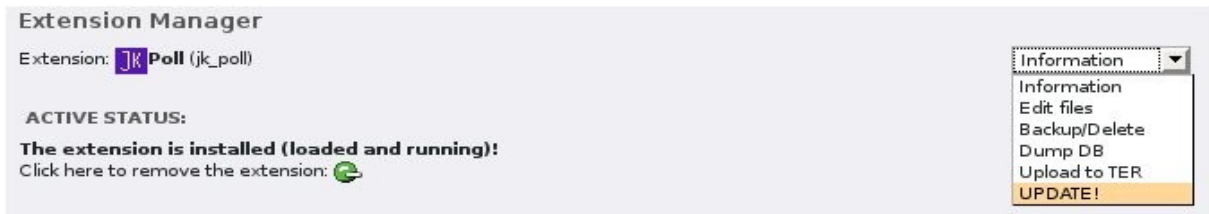
To only show comments on the result page (if the user already voted) enable the option 'Use comments (Extension comments is required), but only on RESULT view' in the flexform or use 'plugin.tx_jkpoll_pi1.comments_on_result = 1' with TypoScript. The configuration for the extensions 'comments' looks like this:

```
plugin.tx_comments_pi1.prefixToTableMap.tx_jkpoll_pi1 = tx_jkpoll_poll
plugin.tx_comments_pi1.showUidMap.tx_jkpoll_pi1 = uid_comments
```

Configuration

Upgrading to version 0.6+

When you upgrade from a version older than 0.6 you have to convert your old poll records in order to use them as before. You can do that update via the Extension Manager. Use the Extension Manager and select jk_poll. In the dropdown in the upper right select the item "UPDATE!". The database will get updated and now your old poll records can be used again. If no update is necessary the item "UPDATE!" is not part of the dropdown.



Upgrading to version 0.9+

When you upgrade from a version older than 0.9 and are using flexform for configuration of the poll plugin, all of these settings are lost. Since the structure of the flexform changed you have to configure it again. Configuration via TypoScript is not affected.

Using TSconfig to add poll to every page

You can also add the poll to every page of your website by using TypoScript. For this purpose most of the options in the frontend plugin are also available via TypoScript. A list of all options available is shown below:

Option	Description
plugin.tx_jkpoll_pi1.pid	The uid of the page containing the poll-records (equivalent to starting-point).
plugin.tx_jkpoll_pi1.template	The path to the template which should be used (for example "fileadmin/test.htm").
plugin.tx_jkpoll_pi1.css_file	The path to the css file which should be used instead of the default one (e.g. "fileadmin/test.css").
plugin.tx_jkpoll_pi1.type	Select between vertical (0 - horizontal, 1 - vertical, 2 - Google Chart).
plugin.tx_jkpoll_pi1.factor	Factor to stretch the image resultbar, Default value is 1.
plugin.tx_jkpoll_pi1.show_zero_percent	If set, options with 0 percent are shown as 1px line in the result (0 - disabled, 1 - enabled).
plugin.tx_jkpoll_pi1.list	Show the list of polls (0 - disabled, 1 - enabled).
plugin.tx_jkpoll_pi1.list_first	Show the newest poll in list (0 - disabled, 1 - enabled).
plugin.tx_jkpoll_pi1.hide_current	Don't show the current poll.
plugin.tx_jkpoll_pi1.list_limit	Only show amount of x polls.
plugin.tx_jkpoll_pi1.check_ip	Use IP-check (0 - disabled, 1 - enabled).
plugin.tx_jkpoll_pi1.check_ip_time	Time (in hours) after which a vote is possible again (if used IP-check).
plugin.tx_jkpoll_pi1.cookie	Specify the type of the cookie (same values as in flex form).
plugin.tx_jkpoll_pi1.cookie_domainpath	If you use the poll on every page and the path changes, it would be possible to vote on every page again. To prevent this the cookie can be set for the whole domain (0 - disabled, 1 - enabled). You might also need this option when using RealURL and multilanguage polls (see section "RealURL").
plugin.tx_jkpoll_pi1.check_user	Check for fe_users (0 - disabled, 1 - enabled).

Option	Description
plugin.tx_jkpoll_pi1.captcha	Include captcha (0 - disabled, 1 - enabled).
plugin.tx_jkpoll_pi1.color	Default color for the poll bars.
plugin.tx_jkpoll_pi1.path_to_images	Alternative path to image files for the image resultbar with trailing slash. Default value is EXT:jk_poll/images/.
plugin.tx_jkpoll_pi1.image_type	Specify another file extension for the image files (e.g. plugin.tx_jkpoll_pi1.image_type = png). Default is gif.
plugin.tx_jkpoll_pi1.PIDforward	Page ID of page to which should be forwarded after successful vote.
plugin.tx_jkpoll_pi1.first_answer_selected	First answer is selected when showing the form to vote (0 - disabled, 1 - enabled).
plugin.tx_jkpoll_pi1.vote_language_specific	Votes are counted for every language (0 - disabled, 1 - enabled). Default value is 0.
plugin.tx_jkpoll_pi1.check_language_specific	Check for users who already voted is language specific (0 - disabled, 1 - enabled). When enabled, users could vote one time for every language available. Default value is 0.
plugin.tx_jkpoll_pi1.comments	Enable compatibility with extension "comments" (0 - disabled, 1 - enabled)
plugin.tx_jkpoll_pi1.comments_on_result	Enable comments from extension "comments" only on result page. (0 - disabled, 1 - enabled)
plugin.tx_jkpoll_pi1.submitbutton_params	Parameters to add to default submit button. (e.g. style="padding-top:10px;")
plugin.tx_jkpoll_pi1.custom_submit	Define your own submit button. (e.g. "<input type="image" src="submit.png" />")
plugin.tx_jkpoll_pi1.show_css_bars	Use CSS to render the poll bars. (0 - disabled, 1 - enabled)
plugin.tx_jkpoll_pi1.google_width	Width of the image created by Google chart.
plugin.tx_jkpoll_pi1.google_height	Height of the image created by Google chart.
plugin.tx_jkpoll_pi1.show_results_in_list	Show result of polls in LIST view. (0 - disabled, 1 - enabled)
plugin.tx_jkpoll_pi1.answer_image_width	Width of the image associated with an answer.
plugin.tx_jkpoll_pi1.answer_image_height	Height of the image associated with an answer.
plugin.tx_jkpoll_pi1.pagebrowser	Use pagebrowser in LIST vie (extension "pagebrowse" must be installed).
plugin.tx_jkpoll_pi1.pagebrowser_items	Amount of polls shown on one page of pagebrowser.
plugin.tx_jkpoll_pi1.checkbox	Allow users to vote for more than only one answer by using checkboxes instead of radio buttons.
plugin.tx_jkpoll_pi1.backlink	Include link to page visited before (go back 1 page in browser history).
plugin.tx_jkpoll_pi1.link_to_poll	Include link to POLL view if user has not voted yet.
plugin.tx_jkpoll_pi1.link_to_result	Include link to RESULT view.

The poll could be included with something like this:

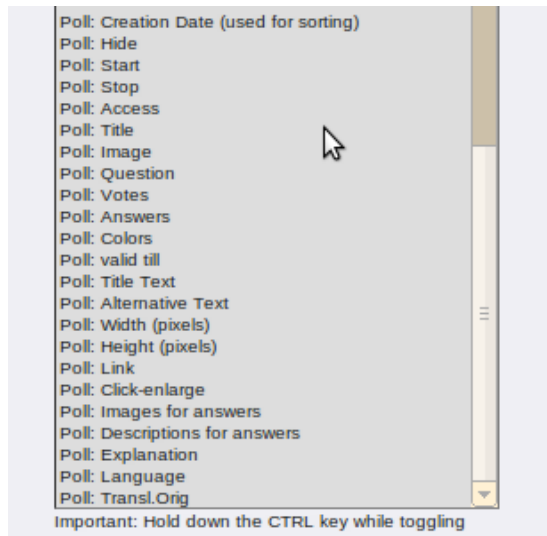
```
poll < plugin.tx_jkpoll_pi1
poll.pid = 5
poll.type = 1
poll.cookie = off

page.10.subparts.POLL < poll
```

Hiding fields in the backend for editors

Because of many new features added the form for creating new polls might be confusing for editors. All fields

are defined as Allowed excludefields and can be hidden for simplicity. Just configure your editor group and add only the fields which should be seen for your editors:



Templates

Templates Included

There are several templates included with this extension. A short list of them with description is provided in the table below. If no template is specified the file jk_poll.tmpl is used by default. You can specify another template via flexform or Tsconfig (e.g. plugin.tx_jkpoll_pi1.template=fileadmin/templates/test.htm).

Filename	Description
jk_poll.tmpl	The default template of jk_poll.
jk_poll_images.tmpl	A template which can be used when adding a picture to every possible answer.
jk_poll_results_list.tmpl	A template which can be used when showing the results of polls in LIST view.
jk_poll_images_list.tmpl	A template which can be used to show the image(s) of the polls in LIST view.

CSS Classes used

The new template uses CSS for displaying your polls. The default CSS file is typo3conf/jk_poll/res/jk_poll.css. You can define your own css file via flexform or Tsconfig (e.g. plugin.tx_jkpoll_pi1.css_file = fileadmin/templates/poll.css). If you don't want to use a CSS file at all, configure this option with "none". Here is a short overview of the different class definitions of the default template you might like to change:

CSS class	Description
tx_jkpoll_pi1_image	Class definition for image of the questiontext.
tx_jkpoll_pi1_answers	Class definition for block of possible answers when the user hasn't already voted.
tx_jkpoll_pi1_answer	Class definition for every single answer in the block from above.
tx_jkpoll_pi1_captcha	Class definition for the section containing the captcha.
tx_jkpoll_pi1_link_list	Class definition for link to list of old polls.
tx_jkpoll_pi1_link_poll	Class definition for link to POLL view.
tx_jkpoll_pi1_link_result	Class definition for link to RESULT view.
tx_jkpoll_pi1_result_votes	Class definition for line showing how many user voted.
tx_jkpoll_pi1_result_vertical	Class definition for block of result when using vertical as type.


```
<!-- ###POLL_LINK### -->
<p>###LINK###</p>
<!-- ###POLL_LINK### -->
<!-- ###POLL_LIST### -->
```

The template consists of different parts described in the table below.

Part	Description	included Subparts/Markers
<!-- ###POLL_HEADER### -->	used to specify the layout of the question, markers represent the different form-fields of the question in the poll record (see Users Manual)	<p>###TITLE### the title of the poll</p> <p>###QUESTION_IMAGE### the image</p> <p>###QUESTIONTEXT### the text with your question</p>
<!-- ###POLL_VOTE### -->	specifies the layout of the possible answers people can vote for	<p><!-- ###ANSWER_VOTE### --> repeated part for the different answers</p> <p><!-- ###SR_FREECAP_INSERT### --> subpart needed when sr_freecap is used (otherwise subpart is replaced with nothing)</p> <p><!-- ###CAPTCHA_INSERT### --> subpart needed when captcha is used (otherwise subpart is replaced with nothing)</p> <p>###LINKLIST### link to a list of old polls</p> <p>###SUBMIT### submit button</p>

Part	Description	included Subparts/Markers
<pre><!-- ###POLL_ANSWER_VERTICAL### --></pre>	<p>specifies the layout of the vertical layout</p>	<pre>###VOTES###</pre> <p>the total amounts of registered votes</p> <pre>###VOTES_COUNT###</pre> <p>the total amount of people voted (not equal to ###VOTES### if users are allowed to vote for more than one answer)</p> <pre><!-- ###ANSWER_RESULT### --></pre> <p>repeated part for the different answers represented by a poll bar</p> <pre>###IMG_PERCENTAGE_RESULT###</pre> <p>the percentage of votes as an image</p> <pre>###ANSWERTEXT_RESULT###</pre> <p>the text of the answer</p> <pre>###PERCENTAGE_RESULT###</pre> <p>the percentage of people voted for the answer</p> <pre>###EXPLANATION###</pre> <p>text shown as an explanation of the result after user voted</p> <pre>###LINKLIST###</pre> <p>link to a list of old polls</p>
<pre><!-- ###POLL_ANSWER_HORIZONTAL### --></pre>	<p>specifies the layout of the horizontal layout</p>	<pre>###VOTES###</pre> <p>the total amounts of registered votes</p> <pre><!-- ###ANSWER_RESULT### --></pre> <p>repeated part for the different answers represented by a poll bar</p> <pre>###IMG_PERCENTAGE_RESULT###</pre> <p>the percentage of votes as an image</p> <pre>###ANSWERTEXT_RESULT###</pre> <p>the text of the answer</p> <pre>###PERCENTAGE_RESULT###</pre> <p>the percentage of people voted for the answer</p> <pre>###EXPLANATION###</pre> <p>text shown as an explanation of the result after user voted</p> <pre>###LINKLIST###</pre> <p>link to a list of old polls</p>

Part	Description	included Subparts/Markers
<!-- ###POLL_ANSWER_GOOGLE### -->	specifies the layout of the Google chart layout	<p>###VOTES### the total amounts of registered votes</p> <p>###GOOGLE_CHART### the percentage for every answer presented in a Google chart</p> <p><!-- ###ANSWER_RESULT### --> repeated part for the different answers shown in the Google chart</p> <p>###ANSWERTEXT_RESULT### the text of the answer</p> <p>###PERCENTAGE_RESULT### the percentage of people voted for the answer</p> <p>###EXPLANATION### text shown as an explanation of the result after user voted</p> <p>###LINKLIST### link to a list of old polls</p>
<!-- ###POLL_LIST### -->	specifies the layout of the list of all polls	<p><!-- ###POLL_LINK### --> repeated part for the different links to poll</p> <p>###LINK### the link to a poll</p> <p><!-- ###POLL_RESULT### --> subpart for showing the result of the poll already in list view</p> <p>###RESULT### the result of the poll</p>

If you adopt the template to your needs you can only insert the the layout of the poll you'd like to use (vertical or horizontal). Of course you also do not need to use all of the markers (for example ###QUESTION_IMAGE###). But be aware that the subparts are needed.

Add additional colors for the poll bars

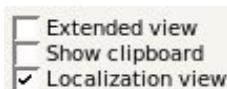
To add additional colors you can create a gif-file with a color you like which should have the dimension 1x1 pixels. Put the image to the folder images in the location you installed the extension (for local installation this should be typo3conf/ext/jk_poll/images). To specify your new color to an answer of your poll use the part before the ".gif" (for an image named "purple.gif" this would be purple) like described in the Users manual.

Multilanguage polls

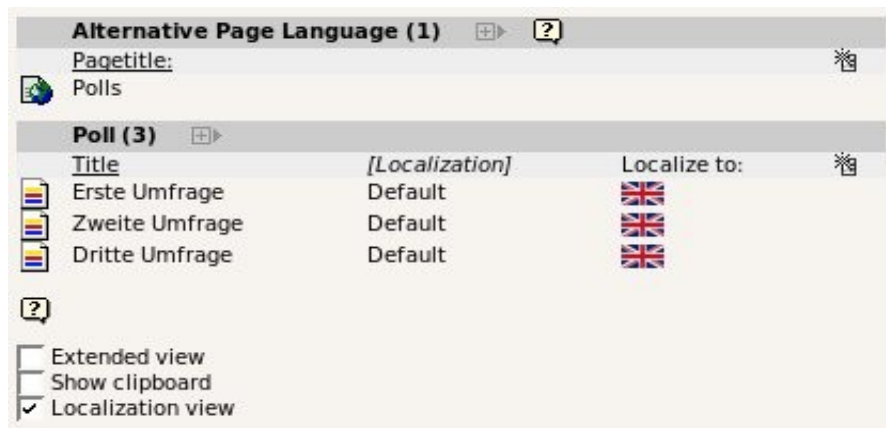
To make jk_poll work with multiple languages on your site, follow the steps described below (same as in tt_news).

Open the sysfolder (or page) where your polls are located and create an "Alternative Page Language" for each of your translations.

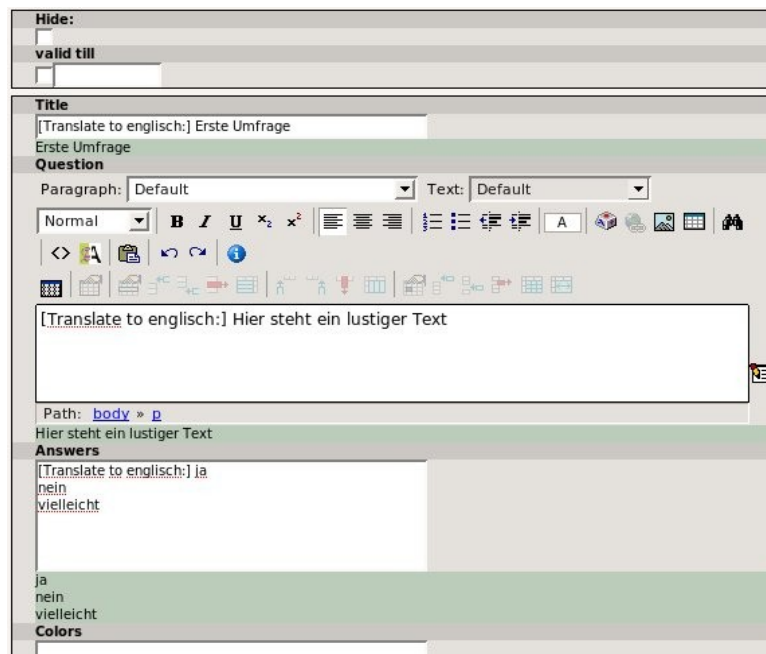
Use the list module and activate the "Localization view".



Now you should see something like this:

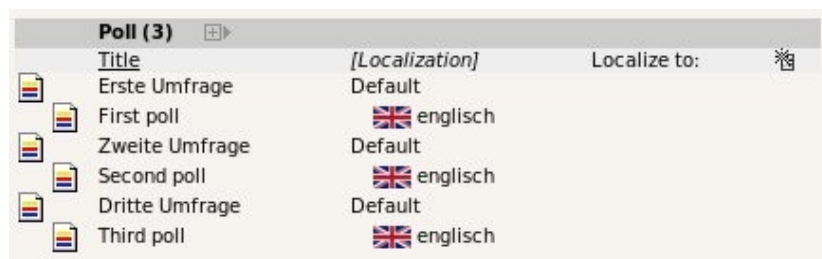


Just click on the flag icon to create a new translation for your poll:



Some fields which are not necessary in the translation (like the image) are excluded. So you don't see them in the form.

After you made the translations for all poll records the list module could look like this:



If you use multiple languages for your polls you can choose if the votes are counted for every single poll (different amount of votes in every language) or if the votes are counted for the parent poll (the poll created in the default language). To do so you have to use the config described in the section "Using TSconfig to add poll to every page". The votes are counted for the parent poll by default.

RealURL

If you use RealURL and you want to count votes for every language separately you might have to configure jk_poll for not setting cookies for the whole domain. You can do this only via TypoScript (see section “Using TSconfig to add poll to every page”):

```
plugin.tx_jkpoll_pi1.cookie_domainpath = 0
```

To-Do list

- Work on integration of AJAX

ChangeLog

Version	Changes:
0.0.1	Added / Changed/ Caught error
0.0.2 - 0.0.5	Updated manual
0.0.6	Added possibility to check if visitor already voted by logging th IP. Added possibility to list old polls and show results.
0.0.7	Added possibility to vote also for old polls (configurable in Backend).
0.1.0	Added possibility to specify how long cookies should be set (also use of non-persistent cookies possible).
0.1.4	Changed the template-file. Old one is still available (poll_old.tpl). Included support for captcha (extension Captcha is required). Some small bugfixes.
0.2.0	Added possibility to only allow fe users to vote for an answer.
0.3.0	Added a listing of the poll records to the Web > Page module. Fixed a little bug in the html output (thanks to Peter Harlander). Prevents FE users from voting again with "page reload" of the browser (if poll is only for FE users).
0.3.5	Added configuration via TSconfig.
0.3.6	Changed the template to get valid XHTML output.
0.4.0	Added some options to the image defined in the poll (like options for content element image). Added new type result, which shows the result of the last poll record. Added configuration for captcha via TSconfig.
0.4.1	Added configuration for default color of the poll bars. Added italian language (thanks to Claudio Strizzolo).
0.4.2	Some minor changes.
0.5.0	Security fixes for status 'reviewed'.
0.5.1	Fixed a small issue in the LIST view.
0.5.2	Added feature to forward to a page after successful vote. Added french translation (thanks to Grégory Duchesnes). Small fix for the captcha-html output (thanks to Daniele Maffoli).
0.6.0	Added support for multilanguage sites. Added support for sr_freecap. Other small improvements.
0.7.0	Changes submitted from Ralf Hettinger: <ul style="list-style-type: none"> - general code cleanup - handle enableFields (start- und endtime, hidden, deleted) using cObj->enablefields) - change use of time() to SIM_EXEC_TIME (makes simulating of times in frontend possible) - change sorting in backend to crdate (as displayed in the frontend) - labels for "no votes" and "one vote" - new options for TypoScript (explained in ext_typoscript_setup.txt and manual) Added first experimental support of Google Chart API to display votes.

Version	Changes:
0.8.0	<p>Added new template(s).</p> <p>Possibility to add images and description to different answers (see additional template <code>jk_poll_images.tpl</code> as example).</p> <p>Show results of poll in LIST view (good template for this might still be needed).</p> <p>Hide current poll in LIST view.</p> <p>Added option to use CSS to display the result bars (thanks to Michaël DE BONA).</p> <p>Added field explanation which is shown after the users vote and can be useful when creating a poll as kind of a quiz.</p> <p>Added get parameters to make <code>jk_poll</code> work with extension comments (see http://www.krausmueller.de/en/detail/article/kommentare-zu-umfragen.html)</p> <p>Updated manual.</p>
0.8.2	<p>Change in form-tag to be XHTML 1.0 Strict compatible (thanks to Gernot Leitgab for the hint).</p> <p>Included danish translation (thanks to Morten Nisker).</p> <p>Changed manual to hopefully be rendered on <code>typo3.org</code> correctly.</p>
0.9.0	<p>Option to let users select more than one answer when voting (uses checkboxes instead of radio buttons).</p> <p>Marker <code>###QUESTION_IMAGE###</code> also added to LIST view (height and width for the image can be set).</p> <p>Added pagebrowser to LIST view (extension "pagebrowse" is required).</p> <p>Added option for link from POLL view to RESULT view and back. So users can watch the result and then go back to vote for an answer (implementing this with AJAX perhaps will be done in the future).</p>
0.9.1	<p>Added marker <code>###VOTES_COUNT###</code>. Due to the fact that users may also vote for more than one answer, the amount of votes is not necessarily the amount of people voted. <code>###VOTES_COUNT###</code> counts the people voted.</p> <p>Change the type of the images for the poll bars to e.g. png via TypoScript with <code>plugin.tx_jkpoll_pi1.image_type = png</code> (gif is default). Thanks to Robert Heel for submitting a patch for this.</p> <p>Restructured the form for creating a new poll record. First time users now should not be confused by too many form fields available.</p>