

EXT: Poll

Extension Key: **jk_poll**

Copyright 2000-2002, johannes@krausmueller.de, <johannes@krausmueller.de>

This document is published under the Open Content License
available from <http://www.opencontent.org/opl.shtml>

The content of this document is related to TYPO3
- a GNU/GPL CMS/Framework available from www.typo3.com

Table of Contents

EXT: Poll	1	Users manual	3
Introduction	1	Configuration	6
What does it do?.....	1	To-Do list	8
Screenshots.....	2	Changelog	8

Introduction


What does it do?

A poll based on the extension quickpoll. A template-file can be used to define the output in the frontend. It is also possible to create a horizontal or vertical display of the percentage of users voted for an answer.

Screenshots

- Vote for an answer

An interesting poll



This is a new poll extension


This poll is based on the extension quickpoll. A template-file can be used to define the output in the frontend. It is also possible to create a horizontal or vertical display of the percentage of users voted for an answer.

Do you like this extension?

yes
 no
 don't know

- the vertical result of the poll

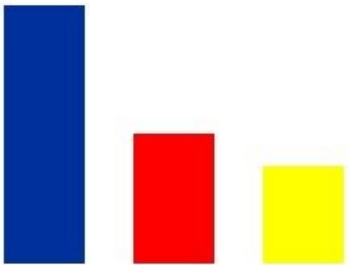
An interesting poll



This is a new poll extension

This poll is based on the extension quickpoll. A template-file can be used to define the output in the frontend. It is also possible to create a horizontal or vertical display of the percentage of users voted for an answer.

Do you like this extension?



Answer	Percentage
yes	53.3 %
no	26.7 %
don't know	20 %

- the horizontal result of the poll

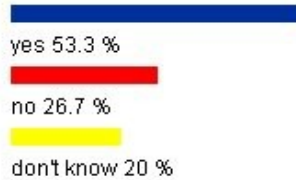
An interesting poll



This is a new poll extension

This poll is based on the extension quickpoll. A template-file can be used to define the output in the frontend. It is also possible to create a horizontal or vertical display of the percentage of users voted for an answer.

Do you like this extension?



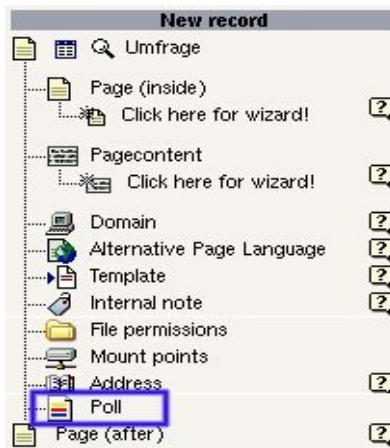
Users manual

Installation

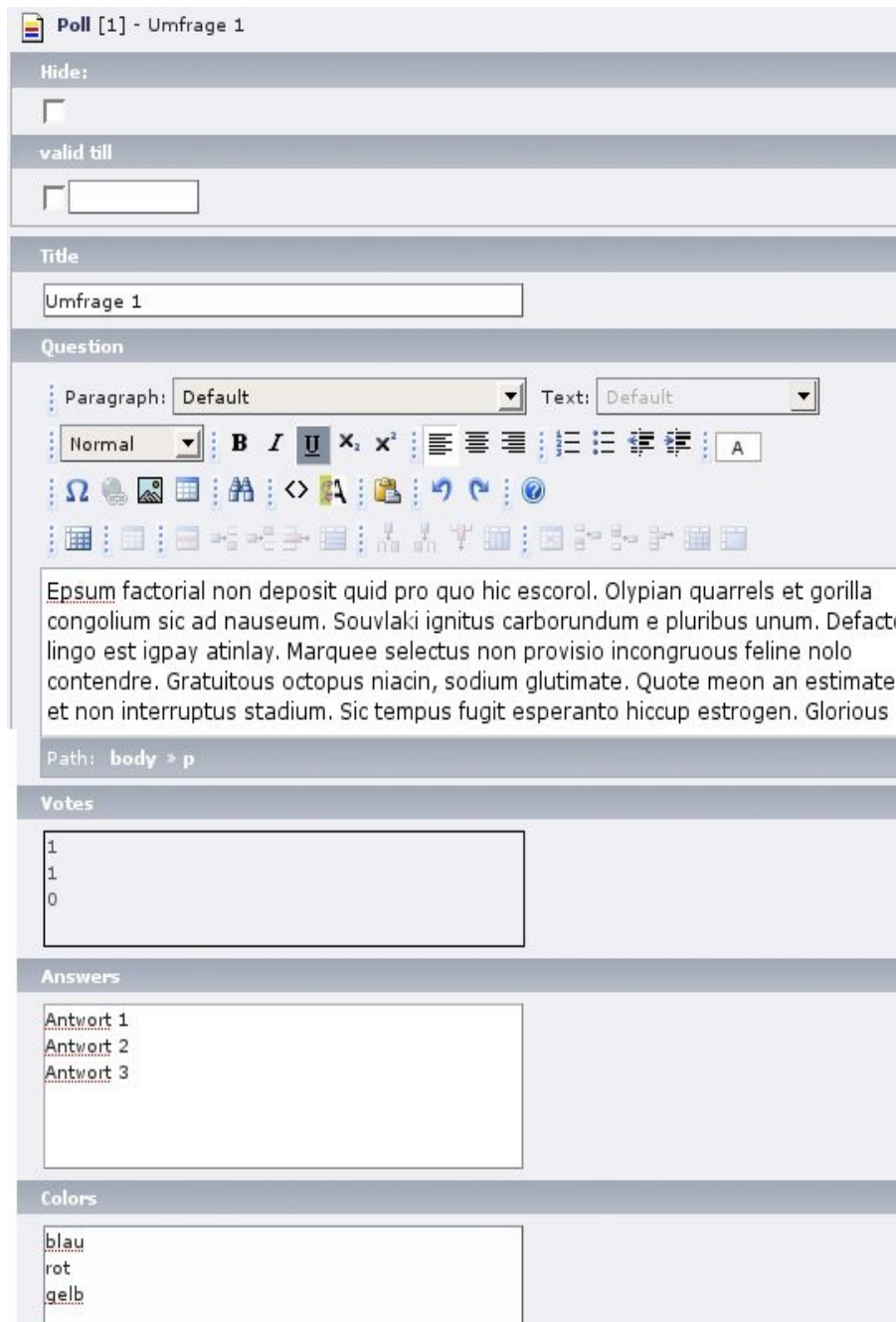
Use the extension manager to install the extension.

Creating a poll record

To start a poll you have to create a new poll record. To do so, choose a site which contains the records and use the click-menu to create a new one.



A form opens, showing a poll record:



Poll [1] - Umfrage 1

Hide:

valid till:

Title:

Question: Paragraph: Text:
Normal **B** *I* U x_2 x^2 [List icons] [Link icon] [Image icon] [Code icon] [Undo icon] [Redo icon] [A]

Epsum factorial non deposit quid pro quo hic escorol. Olypian quarrels et gorilla congolium sic ad nauseum. Souvlaki ignitus carborundum e pluribus unum. Defacto lingo est igpay atinlay. Marquee selectus non provisio incongruous feline nolo contendre. Gratuitous octopus niacin, sodium glutimate. Quote meon an estimate et non interruptus stadium. Sic tempus fugit esperanto hiccup estrogen. Glorious

Path: **body** > **p**

Votes:

Answers:

Colors:

There are fields where you can put a title, an image and your question. The important part is the textbox for your answers. Every line describes an answer. The amount of votes for an answer are shown in the textbox "Votes". When you set up the poll this box should be clear or have a value of "0" for every answer. To define in which color the answer should be rendered you can use the field "Color". As colors you can use by default blue, red, yellow, green and black. Other colors can also specified (see section Configuration). If you don't define a color the default one is taken from the plugin configuration.

Here is an example for a poll wit some colors defined:

Answers:
yes
no
don't know

Colors:
green
blue
yellow

To allow votes only until a special day but to show the result of the poll after this day you can use the field “valid till” at the very beginning of the form. Votes are only possible until the day specified.

Inserting the plugin for display

You now have to insert a plugin as pagecontent to the page the poll should be displayed on in the frontend. To do so, create a new pagecontent and select “Insert plugin” as type. In the drop-down box “Plugin” you have to select “Poll”. After this you can see a form like this:

If the page where you created the poll record isn't the same as the one where you inserted the plugin, you have to define the page with your poll record in the field “Startingpoint. If it is the same page, nothing special has to be done. Save the form and view the page on which you inserted the pagecontent (use the button “Save document and view page” on top of the form). You should now see your poll.

There are several options to configure your poll. They are separated in “General Settings” and “Template”.

General Settings:

Option	Description
What to display	You can select the values “POLL” or / and “LIST”. With “POLL” you display the newest poll. “LIST” shows a list of all polls located at the specified Startingpoint.
Amount of polls (LIST)	Limit the amount of shown polls to the inserted value. Only takes effect if “LIST” is selected in first option.
Show first poll in LIST	Specifies if the newest poll should be shown in LIST or not. Only takes effect if “LIST” is selected in first option.
Allow votes for old polls in LIST	When selected it is possible to vote for an old poll located in the list. Only takes effect if “LIST” is selected in first option.
Set cookie for x days (value "off" for non-persistent cookie)	Specifies for how many days the cookie, preventing a visitor from voting again, will last. If you use the value "off" non-persistent cookies will be used (the cookies are deleted when the session ends). If no value is entered the default is 30 days. To disable cookies completely it is also possible to insert “no”.
Allow only fe_users to vote	Only Frontend users can vote for an answer (you could set the cookie value to “no” to disable cookies).
Check IP before vote is possible	When selected the IP-addresses of the visitors who voted for an poll are saved. This can be used to prevent visitors to vote more than once when they disabled cookies.

Option	Description
Allow another vote after x hours	Allows another vote from an IP logged as already voted after specified value of hours. To specify values different from full hours use numbers like 0.5 for half an hour (you have to use a dot, commas are not accepted. Only takes effect if "Check IP before vote is possible" is selected in the option before.
Use captcha (Extension Captcha is required)	To vote for an answer the user has to insert a special string (see extension Captcha from Kasper).

Template:

Option	Description
Page for single view (POLL)	If you only selected the value "LIST" in the section "General Settings" you have to specify a page where a plugin with "POLL" exists, because the results of the polls will be displayed there. (Normally you should use the value "LIST" in connection with "POLL")
Type	Specifies the type of the poll. It can be chosen between horizontal and vertical ((see screenshots in section Introduction).
Template	You can set a template-file which should be used in the rendering process of the poll, if you'd like to adopt the layout to your needs (see Configuration).
Color	The default color if no color is defined in the poll record. The same values as in the poll record can be used here. If no color is given the default is blue.
Path for images	Specify path where images can be found (e.g.: /fileadmin/template/images/). Default value is EXT:jk_poll/images/
Height/Width	The height or the width of the poll bar (depends on the type of the poll selected before). You should try some values to find one which suits you best.
Factor	The factor is used to stretch the poll bars. The size of the poll bars is the percentage of votes in pixel. Due to this fact they could be rather small, the factor is multiplied with the amount of pixels. A suitable value should be between 1 and 3.
Show zero percent as 1 pixel	If set, options with 0 percent are shown as 1px line in the result.
Include link to list of old polls	Include a link to old polls before the submit button (Text has to be set in locallang_db).
Page to forward to after vote	Forward to specified page after successful vote.

Multilanguage:

Option	Description
Count votes for every language separately	If checked votes are counted for every language separately. Otherwise votes from different languages are summarized.
Check if user can vote for every language separately	If checked a user might vote for every language available. Otherwise the checks if a user can still vote (see General Settings) are considered for every language an the user can only vote once.

Google Chart:


Option	Description
Width	Specify the width of the image generated with Google Chart.
Height	Specify the height of the image generated with Google Chart.


Configuration

Upgrading to version 0.6+

When you upgrade from a version older than 0.6 you have to convert your old poll records in order to to use them as before. You can do that update via the Extension Manager. Use the Extension Manager and select jk_poll. In the dropdown in the upper right select the item "UPDATE!". The database will get updated and now your old poll records can be used again. If no update is necessary the item "UPDATE!" is not part of the dropdown.

Extension Manager

Extension:  **Poll** (jk_poll)

ACTIVE STATUS:
The extension is installed (loaded and running)!
 Click here to remove the extension: 

Information
 Information
 Edit files
 Backup/Delete
 Dump DB
 Upload to TER
UPDATE!

Using TSconfig to add poll to every page

You can also add the poll to every page of your website by using TypoScript. For this purpose most of the options in the frontend plugin are also available via TypoScript. A list of all options available is shown below:

Option	Description
plugin.tx_jkpoll_pi1.pid	The uid of the page containing the poll-records (equivalent to starting-point).
plugin.tx_jkpoll_pi1.template	The path to the template which should be used (for example "/fileadmin/test.htm").
plugin.tx_jkpoll_pi1.type	Select between vertical (0 - horizontal, 1 - vertical, 2 - Google Chart).
plugin.tx_jkpoll_pi1.factor	Factor to stretch the image resultbar, Default value is 1.
plugin.tx_jkpoll_pi1.show_zero_per cent	If set, options with 0 percent are shown as 1px line in the result (0 - disabled, 1 - enabled).
plugin.tx_jkpoll_pi1.list	Show the list of polls (0 - disabled, 1 - enabled).
plugin.tx_jkpoll_pi1.list_first	Show the newest poll in list (0 - disabled, 1 - enabled).
plugin.tx_jkpoll_pi1.list_limit	Only show amount of x polls.
plugin.tx_jkpoll_pi1.check_ip	Use IP-check (0 - disabled, 1 - enabled).
plugin.tx_jkpoll_pi1.check_ip_time	Time (in hours) after which a vote is possible again (if used IP-check).
plugin.tx_jkpoll_pi1.cookie	Specify the type of the cookie (same values as in flex form).
plugin.tx_jkpoll_pi1.cookie_domain path	If you use the poll on every page and the path changes, it would be possible to vote on every page again. To prevent this the cookie can be set for the whole domain (0 - disabled, 1 - enabled).
plugin.tx_jkpoll_pi1.check_user	Check for fe_users (0 - disabled, 1 - enabled).
plugin.tx_jkpoll_pi1.captcha	Include captcha (0 - disabled, 1 - enabled).
plugin.tx_jkpoll_pi1.color	Default color for the poll bars.
plugin.tx_jkpoll_pi1.path_to_image s	Alternative path to image files for the image resultbar with trailing slash. Default value is EXT:jk_poll/images/.
plugin.tx_jkpoll_pi1.PIDforward	Page ID of page to which should be forwarded after successful vote.
plugin.tx_jkpoll_pi1.first_answer_selected	First answer is selected when showing the form to vote (0 - disabled, 1 - enabled).
plugin.tx_jkpoll_pi1.vote_language _specific	Votes are counted for every language (0 - disabled, 1 - enabled). Default value is 0.
plugin.tx_jkpoll_pi1.check_languag e_specific	Check for users who already voted is language specific (0 - disabled, 1 - enabled). When enabled, users could vote one time for every language available. Default value is 0.

The poll could be included with something like this:

```
poll < plugin.tx_jkpoll_pi1
poll.pid = 5
poll.type = 1
poll.cookie = off

page.10.subparts.POLL < poll
```

Creating your own template

Besides the configuration of the plugin it is also possible to use your own template-file. If you don't specify your own template, the following is used:

```
<!-- ###POLL_HEADER### -->
<div>
<h1>###TITLE###</h1>
</div>
<div style="float:left; padding-right:10px;">
###QUESTION_IMAGE###
</div>
<div>
###QUESTIONTEXT###
</div>
<!-- ###POLL_HEADER### -->

<!-- ###POLL_VOTE### -->
<div>
<p>
<br />
<!-- ###ANSWER_VOTE### -->
###ANSWERTEXT_FORM### ###ANSWERTEXT_VALUE###<br />
<!-- ###ANSWER_VOTE### -->
<br />
###CAPTCHA_IMAGE###<br />
###CAPTCHA_INPUT###<br /><br />
###LINKLIST###<br /><br />
###SUBMIT###
</p>
</div>
<!-- ###POLL_VOTE### -->

<!-- ###POLL_ANSWER_VERTICAL### -->
<div>
<p>
<br />
Votes:&nbsp;###VOTES###<br /></p>
</div>
<!-- ###ANSWER_RESULT### -->
<div style="float:left; padding-right:10px;">###IMG_PERCENTAGE_RESULT###<p><br
/>###PERCENTAGE_RESULT###<br />###ANSWERTEXT_RESULT###<br />###AMOUNT_VOTES### Stimme(n)</p></div>
<!-- ###ANSWER_RESULT### -->
<div style="clear:both; padding-bottom:20px;"></div>
<!-- ###POLL_ANSWER_VERTICAL### -->

<!-- ###POLL_ANSWER_HORIZONTAL### -->
<div>
<p>
<br />
Votes:&nbsp;###VOTES###<br /></p>
<!-- ###ANSWER_RESULT### -->
<p>###IMG_PERCENTAGE_RESULT###<br
/>###PERCENTAGE_RESULT###&nbsp;&nbsp;&nbsp;###ANSWERTEXT_RESULT###&nbsp;&nbsp;&nbsp;###AMOUNT_VOTES### Stimme(n)</p>
<!-- ###ANSWER_RESULT### -->
</div>
<!-- ###POLL_ANSWER_HORIZONTAL### -->

<!-- ###POLL_LIST### -->
<!-- ###POLL_LINK### -->
<p>###LINK###</p>
<!-- ###POLL_LINK### -->
<!-- ###POLL_LIST### -->
```

The template consists of different parts described in the table below.

Part	Description	included Subparts/Markers
<code><!-- ###POLL_HEADER### --></code>	used to specify the layout of the question, markers represent the different form-fields of the question in the poll record (see Users Manual)	<code>###TITLE###</code> the title of the poll <code>###QUESTION_IMAGE###</code> the image <code>###QUESTIONTEXT###</code> the text with your question
<code><!-- ###POLL_VOTE### --></code>	specifies the layout of the possible answers people can vote for	<code><!-- ###ANSWER_VOTE### --></code> repeated part for the different answers <code>###CAPTCHA_IMAGE###</code> image-part of the captcha-check (should only be part of the template if captcha is used) <code>###CAPTCHA_INPUT###</code> input-field of the captcha-check (should only be part of the template if captcha is used) <code>###LINKLIST###</code> link to a list of old polls <code>###SUBMIT###</code> submit button
<code><!-- ###POLL_ANSWER_VERTICAL### --></code>	specifies the layout of the vertical layout	<code><!-- ###ANSWER_RESULT### --></code> repeated part for the different answers represented by a poll bar <code>###IMG_PERCENTAGE_RESULT###</code> the percentage of votes <code>###ANSWERTEXT_RESULT###</code> the text of the answer <code>###PERCENTAGE_RESULT###</code> the percentage of people voted for the answer
<code><!-- ###POLL_ANSWER_HORIZONTAL### --></code>	specifies the layout of the horizontal layout	<code><!-- ###ANSWER_RESULT### --></code> repeated part for the different answers represented by a poll bar <code>###VOTES###</code> the total amounts of registered votes <code>###IMG_PERCENTAGE_RESULT###</code> the percentage of votes <code>###ANSWERTEXT_RESULT###</code> the text of the answer <code>###PERCENTAGE_RESULT###</code> the percentage of people voted for the answer
<code><!-- ###POLL_LIST### --></code>	specifies the layout of the list of all polls	<code><!-- ###POLL_LINK### --></code> repeated part for the different links to poll <code>###LINK###</code> the link to a poll

If you adopt the template to your needs you can only insert the the layout of the poll you'd like to use (vertical or horizontal). Of course you also do not need to use all of the markers (for example `###QUESTION_IMAGE###`). But be aware that the subparts are needed.

Add additional colors for the poll bars

To add additional colors you can create a gif-file with a color you like which should have the dimension 1x1 pixels. Put the image to the folder images in the location you installed the extension (for local installation this should be `typo3conf/ext/jk_poll/images`). To specify your new color to an answer of your poll use the part before the ".gif" (for an image named "purple.gif" this would be purple) like described in the Users manual.

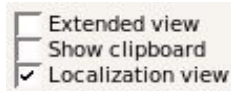
Multilanguage polls

To make `jk_poll` work with multiple languages on your site, follow the steps described below (same as in `tt_news`).

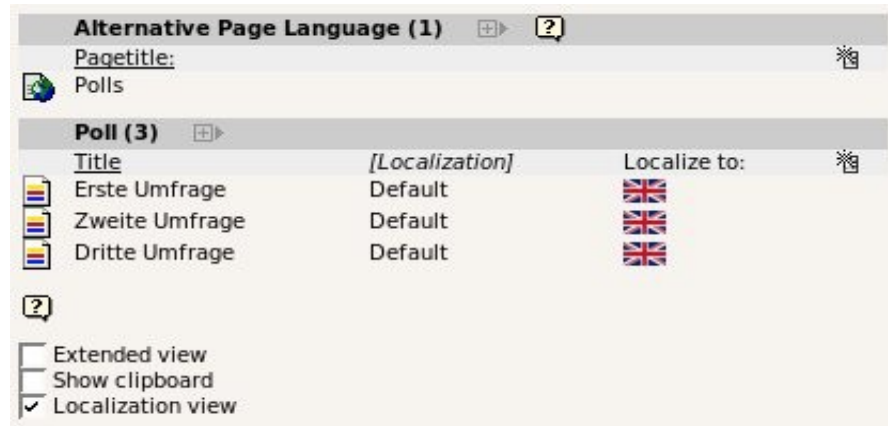
Open the sysfolder (or page) where your polls are located and create an "Alternative Page Language" for each of your

translations.

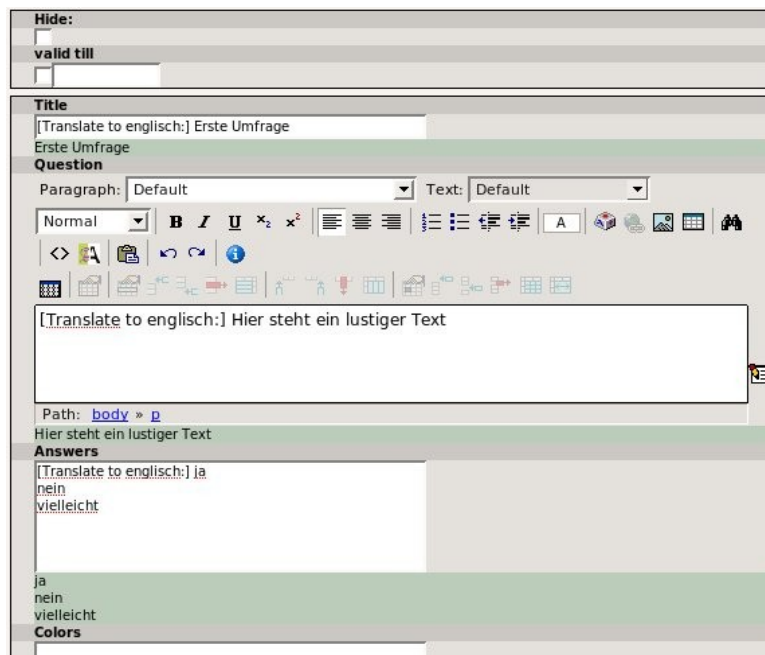
Use the list module and activate the "Localization view".



Now you should see something like this:



Just click on the flag icon to create a new translation for your poll:



Some fields which are not necessary in the translation (like the image) are excluded. So you don't see them in the form.

After you made the translations for all poll records the list module could look like this:



If you use multiple languages for your polls you can choose if the votes are counted for every single poll (different amount of

votes in every language) or if the votes are counted for the parent poll (the poll created in the default language). To do so you have to use the config described in the section "Using TSconfig to add poll to every page". The votes are counted for the parent poll by default.

To-Do list

- Nothing to be done at the moment.

Changelog

Version 0.0.1:

- Initial version.

Version 0.0.2 - 0.0.5:

- Updated manual

Version 0.0.6:

- Added possibility to check if visitor already voted by logging th IP.
- Added possibility to list old polls and show results.

Version 0.0.7:

- Added possibility to vote also for old polls (configurable in Backend).

Version 0.1.0:

- Added possibility to specify how long cookies should be set (also use of non-persistent cookies possible).

Version 0.1.4:

- Changed the template-file. Old one is still available (poll_old.tpl).
- Included support for captcha (extension Captcha is required).
- Some small bugfixes.

Version 0.2.0:

- Added possibility to only allow fe users to vote for an answer.

Version 0.3.0:

- Added a listing of the poll records to the Web > Page module.
- Fixed a little bug in the html output (thanks to Peter Harlander).
- Prevents FE users from voting again with "page reload" of the browser (if poll is only for FE users).

Version 0.3.5:

- Added configuration via TSconfig.

Version 0.3.6:

- Changed the template to get valid XHTML output.

Version 0.4.0:

- Added some options to the image defined in the poll (like options for content element image).
- Added new type result, which shows the result of the last poll record.
- Added configuration for captcha via TSconfig.

Version 0.4.1:

- Added configuration for default color of the poll bars.
- Added italian language (thanks to Claudio Strizzolo).

Version 0.4.2:

- Some minor changes.

Version 0.5.0:

- Security fixes for status 'reviewed'.

Version 0.5.1:

- Fixed a small issue in the LIST view.

Version 0.5.2:

- Added feature to forward to a page after successful vote.
- Added french translation (thanks to Grégory Duchesnes).
- Small fix for the captcha-html output (thanks to Daniele Maffoli).

Version 0.6:

- Added support for multilanguage sites.
- Added support for sr_freecap.
- Other small improvements.

Version 0.7:

- Changes submitted from Ralf Hettinger:
 - general code cleanup
 - handle enableFields (start- und endtime, hidden, deleted) using cObj->enablefields)
 - change use of time() to SIM_EXEC_TIME (makes simulating of times in frontend possible)
 - change sorting in backend to crdate (as displayed in the frontend)
 - labels for "no votes" and "one vote"
 - new options for TypoScript (explained in ext_typoscript_setup.txt and manual):
 - plugin.tx_jkpoll_pi1.submitbutton_params
 - plugin.tx_jkpoll_pi1.submit_js_fallback
 - plugin.tx_jkpoll_pi1.path_to_images
 - plugin.tx_jkpoll_pi1.show_zero_percent
 - action hrefs contain all GET parameters
 - change from GET to POST parameters
- added first experimental support of Google Chart API to display votes